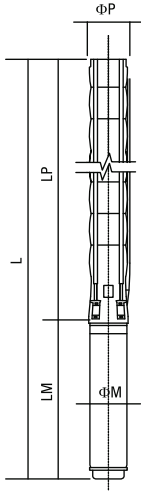


# Teknik Özellikler

## Technical specifications

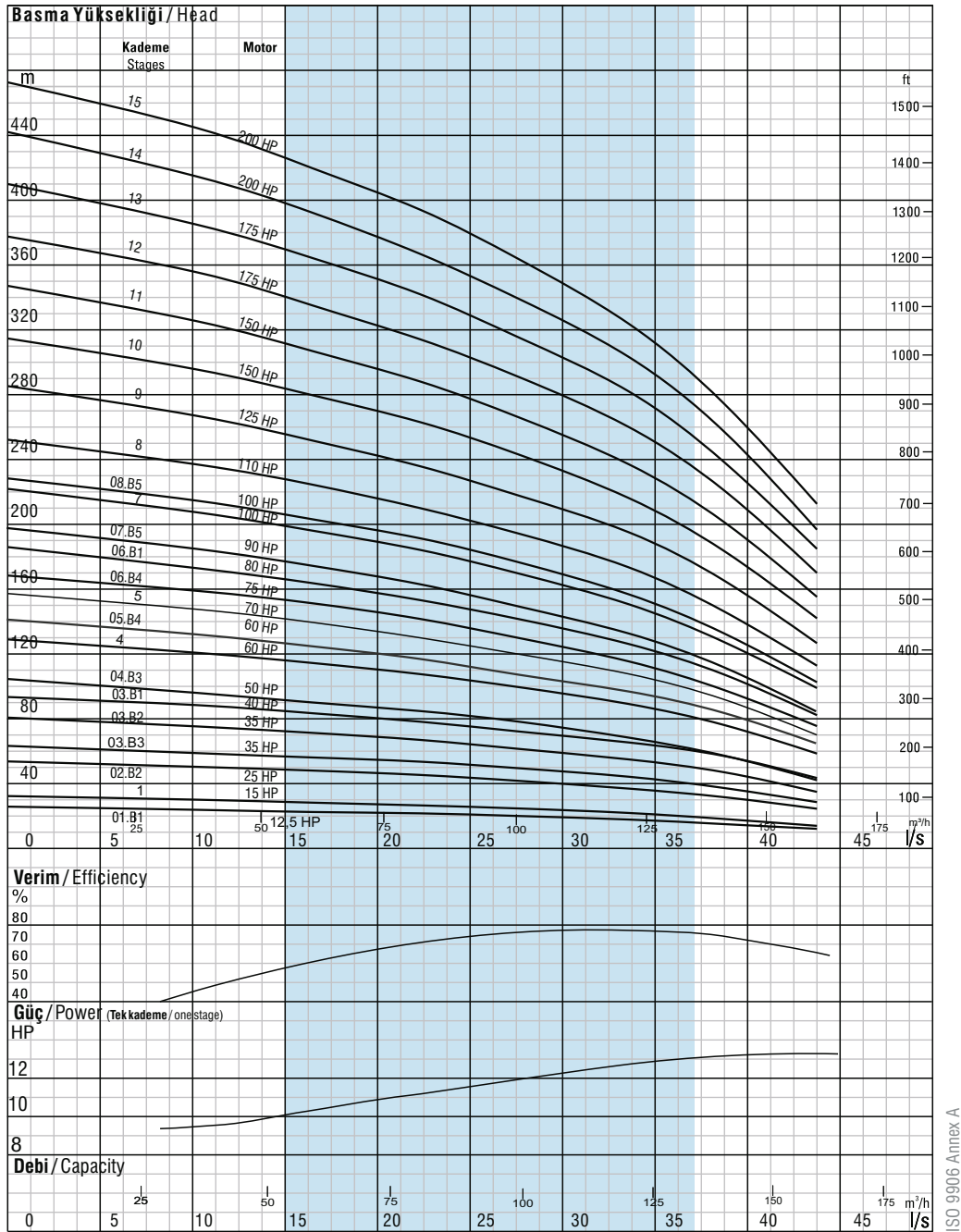


<b>Difüzör</b> Diffuser	: Paslanmaz çelik (AISI 304L) : Stainless steel (AISI 304L)
<b>Çark</b> Impeller	: Paslanmaz çelik (AISI 304L) : Stainless steel (AISI 304L)
<b>Pompa mili</b> Pump shaft	: Paslanmaz çelik (AISI 420) : Stainless steel (AISI 420)
<b>Kaplin</b> Coupling	: Paslanmaz çelik (AISI 420) : Stainless steel (AISI 420)
<b>Süzgeç</b> Strainer	: Paslanmaz çelik (AISI 304) : Stainless steel (AISI 304)
<b>Çıkış haznesi bağlantısı</b> Outlet connection diamete	: 6" (içten pasolu) : 6" (inside threaded)

<b>Max. kum miktarı</b> Max. sand content	: 50 gr / m <sup>3</sup> : 50 gr / m <sup>3</sup>
<b>Klepe</b> Valve cap	: Paslanmaz çelik : Stainless steel
<b>Maksimum gerilim değişimi</b> Voltage	: 380-415 V (+%6 / -%10) : 380-415 V (+%6 / -%10)
<b>Frekans</b> Frequency	: 50 Hz. : 50 Hz.
<b>Maksimum su sıcaklığı</b> Max. water temperature	: 60°C (80°C opsiyonel) : 60°C (80°C optional)
<b>Koruma sınıfı</b> Degree of protection	: IP 68 : IP 68



Pompa Tipi Pump type	Kad. Sayısı Stages	Motor		Ölçüler / Dimensions (mm)					Ağırlık / Weight (kg)		
		kW	HP	L	LM	LP	ΦM	ΦP	Motor Motor	Pompa Pump	Toplam Total
VSP SS 08125/01.B1	1	9.3	12.5	1.500	800	700	142	226	53	38	91
VSP SS 08125/01	1	11.0	15.0	1.551	851	700	142	226	61	38	99
VSP SS 08125/02.B2	2	18.5	25.0	1.556	1.006	850	142	226	80	44	124
VSP SS 08125/03.B3	3	26.0	35.0	2.207/2.940	1.207/940	1.000	142/172	226	90/110	50	140/160
VSP SS 08125/03.B2	3	26.0	35.0	2.207/2.940	1.207/940	1.000	142/172	226	90/110	50	140/160
VSP SS 08125/03.B1	3	30.0	40.0	2.237/1.980/2.039	1.237/980/1.039	1.000	142/172/192	226	104/117/127	50	154/167/177
VSP SS 08125/04.B3	4	37.0	50.0	2.487/2.100/2.249	1.337/1.060/1.099	1.150	142/172/192	226	111/127/133	56	167/183/189
VSP SS 08125/04	4	45.0	60.0	2.289/2.534	1.139/1.184	1.150	172/192	226	142/140	56	198/196
VSP SS 08125/05.B4	5	45.0	60.0	2.439/2.484	1.139/1.184	1.300	172/192	226	142/140	62	204/202
VSP SS 08125/05	5	52.0	70.0	2.518/2.569	1.218/1.269	1.300	172/192	226	153/146	62	215/208
VSP SS 08125/06.B4	6	55.0	75.0	2.756/2.719	1.306/1.269	1.450	172/192	226	164/152	68	232/220
VSP SS 08125/06.B1	6	60.0	80.0	2.774	1.324	1.450	192	226	160	68	228
VSP SS 08125/07.B5	7	67.0	90.0	2.949	1.349	1.600	192	226	169	74	243
VSP SS 08125/07	7	75.0	100.0	2.974	1.374	1.600	192	226	190	74	264
VSP SS 08125/08.B5	8	75.0	100.0	3.124	1.374	1.750	192	226	190	80	270
VSP SS 08125/08	8	81.0	110.0	3.204/3.104	1.454/1.354	1.750	192/231	226	197/255	80	277/335
VSP SS 08125/09	9	92.0	125.0	3.419/3.314	1.519/1.414	1.900	192/231	226	208/274	86	294/360
VSP SS 08125/10	10	110.0	150.0	3.560	1.510	2.050	231	226	299	92	391
VSP SS 08125/11	11	110.0	150.0	3.710	1.510	2.200	231	226	299	94	393
VSP SS 08125/12	12	129.0	175.0	3.960	1.610	2.350	231	226	328	104	432
VSP SS 08125/13	13	129.0	175.0	4.110	1.610	2.500	231	226	328	110	438
VSP SS 08125/14	14	147.0	200.0	4.390	1.740	2.650	231	226	368	116	484
VSP SS 08125/15	15	147.0	200.0	4.540	1.740	2.800	231	226	368	112	480



ISO 9906 Annex A

Firmamız teknolojik gelişmeler nedeniyle değişiklik hakkını saklı tutar.

Due to continuous improvement in design we reserve the right to amend specifications or data without prior notice.

# VSP SS 08125

Çark kanat sayısı / No. of vanes

7

Çıkış haznesi bağlantısı / Outlet connection diameter

6" (içten pasolu) / 6" (inside threaded)

Pompa dış çapı / Pump outside diameter

213 mm

Dönüş Yönü / Rotation

Saatin tersi yönünde / CCW

Devir / Revolution

2900 rpm

Mil çapı / Shaft diameter

30,16 mm

Pompa performans eğrileri 1 bar atmosfer basıncı altında 15 °C sıcaklığındaki, özgül yoğunluğu 1 gr/cm<sup>3</sup> olan su ile elde edilmiştir.The hydraulic working characteristics have been taken with water at 15 °C, at the atmospheric pressure of 1 bar and specific gravity is 1 gr/cm<sup>3</sup>